

The LILIN logo is located in the top right corner. It features a stylized white 'L' icon followed by the word 'LILIN' in a bold, red, sans-serif font with a registered trademark symbol.The LILIN logo is repeated on the side of the camera housing in the middle section of the image. It consists of the same stylized white 'L' icon followed by the word 'LILIN' in a bold, black, sans-serif font.

---

# Fast Dome Camera

[www.meritlilin.com](http://www.meritlilin.com)



# 22X/35X

## Super High Resolution Fast Dome Camera

The Super High Resolution Fast Dome features a fully functional pan and tilt camera with 256 configurations and a choice of either a 22x or 35x optical zoom lens. The Camera incorporates an IR Cut Filter mechanism (optional), automatically switching between colour during the day and mono at night, and 8 privacy masking zones, ensuring the latest data protection and security requirements are met. With added features such as the option to programme settings and functions on screen using the five language On Screen Display menu, LILIN's Super High Resolution Fast Dome Camera provides a powerful solution for your security.

### Low Light Illumination

0.1 Lux /F1.6 (Colour)  
0.01 Lux /F1.6 (Mono)

### IR Cut Filter (Optional)

24hr Surveillance

### Optical Zoom

Choice of either 22X or 35X Optical Zoom  
• 22X Optical Zoom Lens, f3.9~85.8mm  
• 35X Optical Zoom Lens, f3.6~126mm

### Resolution

520TVL (Colour), 580TVL(Mono)

### Additional Features

5-Language OSD Menu  
8 Privacy Masking Zones  
128 Preset Positions  
256 PTZ Configurations  
Patrol Learning  
Password Lock

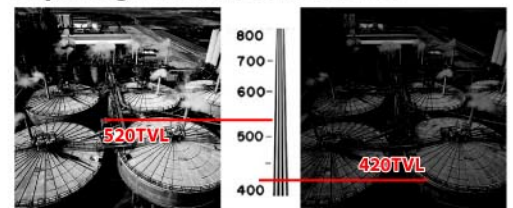
### 5 Language OSD



### Day & Night



### Super High Resolution of 520 TVL



22X Optical Zoom Lens



35X Optical Zoom Lens



Dynamic Privacy Masking

## PIH-7522/7535 Series Super High Resolution Fast Dome Camera

The PIH-7522/7535 Series incorporates a super high resolution colour camera with a fully functional housing, offering both time and cost savings. Combined with the optional outdoor brackets, the PIH-7522/7535 Series has been manufactured to meet the needs of all users in outdoor environments.

### Bracket (Optional) Outdoor Application





## PIH-7622/7635 Series Super High Resolution Fast Dome Camera

The superb functionality of the PIH-7622/7635 Series is enhanced by its simple, elegant design. Sensitivity is increased way above standard fast dome cameras meaning this new product provides the ideal solution for all your surveillance requirements

### Bracket (Optional) Indoor Application



## Easy Installation



	PIH-7622	PIH-7622DH	PIH-7522	PIH-7522DH	PIH-7635DH	PIH-7535DH
Indoor / Outdoor	Indoor	Indoor	Outdoor	Outdoor	Indoor	Outdoor
Zoom	22X				35X	
Focal Length	3.9mm~85.8mm				3.6mm~126mm	
Minimum Aperture Ratio	1:1.6 (Wide) ~ 3.7 (Tele)				1:1.6 (Wide) ~ 4.2 (Tele)	
Minimum Object Distance	1mm (Tele)				1.5 mm (Tele)	
Iris Range	F1.6 ~ 16 / Close				F1.6 ~ 16 / Close	
Angle Field of View	Wide: 38.73°(V) 50.13°(H) Tele: 1.8°(V) 2.4°(H)				Wide: 41.6°(V) 53.8°(H) Tele: 1.23°(V) 1.64°(H)	
Image Pick-up Device	Sony 1/4" Super HAD CCD	Sony 1/4" EXview HAD CCD	Sony 1/4" Super HAD CCD	Sony 1/4" EXview HAD CCD	Sony 1/4" EXview HAD CCD	
Horizontal Resolution	520TVL(Color)	520TVL(Color) 580TVL(Mono)	520TVL(Color)	520TVL(Color) 580TVL(Mono)	520TVL (Color) 580TVL (Mono)	
Minimum Illumination	0.3 Lux at F1.6 (Color)	0.1 Lux at F1.6 (Color) 0.01 Lux at F1.6 (Mono)	0.3 Lux at F1.6 (Color)	0.1 Lux at F1.6 (Color) 0.01 Lux at F1.6 (Mono)	0.1Lux at F1.6 (Color) 0.01Lux at F1.6 (Mono)	
Power Consumption	13W		22W		13W	22W
Dimensions	238mm (H) x 145mm(D)		326mm (H) x 210mm(D)		238mm (H) 145mm (D)	326mm (H) 210mm (D)
Weight	2.3Kg		3.2Kg		2.3Kg	3.2Kg
Heater Activation	NA		On: 15°C, Off: 25°C		NA	On:15°C Off:25°C
Fan Activation	NA		On: 35°C, Off: 25°C		NA	On:35°C Off:25°C
IR Cut Filter	NA	YES	NA	YES	YES	

Design and specifications are subject to change without notice.

## PIH-76XX / 75XX Series Common Specifications

### General

System	NTSC	PAL
Effective Pixels	768 (H) x 494 (V)	752 (H) x 582 (V)
Scanning System	2:1 Interlace, 525 Lines, 60 Fields/sec	2:1 Interlace, 625 Lines, 50 Fields/sec
Scanning Frequency	15.734 KHz (H), 60 Hz (V)	15.625 KHz (H), 50 Hz (V)
Synchronization	Internal / Line Lock Selectable	
Video Output	CVBS 1.0 V <sub>p-p</sub> / 75Ω BNC	
Signal to Noise Ratio	More Than 50 dB (AGC: Off)	
Ambient Operation Temperature	-10°C ~ +50°C (14°F ~ 122°F)	
Operating Humidity	0%~90%	

### Pan & Tilt

Panning Range	360° Endless
Panning Mode	Manual, Auto, Manual Position, Sequential Position
Panning Speed	Manual Approx. 0.15°/s~120°/s 8 Steps, Preset Approx. 1°/s~255°/s, Alarm Trigger Speed 360°/s
Tilting Range	-6° ~ +96°
Tilting Mode	Manual, Auto, Manual Position, Sequential Position
Tilting Speed	Manual Approx. 0.15°/s~120°/s 8 Steps, Preset Approx. 1°/s~255°/s, Alarm Trigger Speed 360°/s

### Main Function

Control Interface	RS-485 Transmission	
Control Function	Pan and Tilt / Zoom and Focus / Iris and ICR / 128 Preset Position / Home Position / Patrol	
Character Display	On / Off (Preset ID: 16 Alphanumeric Characters, Zoom Ratio, Alarm Message, Date/Time, Pan/Tilt Angle)	
Zoom Speed	22X Model	0 ~ 7 Selectable [7: Approx. 3.8 Second (Tele to Wide) in Manual Mode]
	35X Model	0 ~ 7 Selectable [7: Approx. 6.8 Second (Tele to Wide) in Manual Mode]
Zoom Limit	22X Model	Minimum: 1x~10x Selectable, Maximum : 15x~22x Selectable
	35X Model	Minimum: 1x~10x Selectable, Maximum : 18x~35x Selectable
Focus Speed	Slow / MID. / Fast Selectable [Fast : Approx. 3.8 Second (Far to Near) in Manual Mode]	
Auto Focus	Auto / Zoom Trigger / Interval	
Iris	ALC (Adjustable Output Target Level) / Manual	
Electric Shutter Speed	Auto / Manual Selectable (1/60 ~ 1/100,000 sec)	Auto / Manual Selectable (1/50 ~ 1/100,000 sec)
Back Light Compensation	On / Off Selectable	
White Balance	ATW / PUSH / MWB Selectable	
Auto Gain Control	0 ~ 36 dB Selectable	
Auto Mode	OFF / AUTO / SEQ / TOUR / PATROL (STOP / PLAY / LEARN)	
Privacy Zone	On / Off Selectable (Up to 8 Zones Settings)	
Image Mirror	On / Off Selectable	
Image Negative	On / Off Selectable	
Alarm Input / Output	6 Input [Alarm In 1 ~ 6 (NC / NO)], 1 Output (Alarm Out NC / NO)	
Schedule Setting	Alarm Input / Auto Mode / Daylight Saving Time	

Design and specifications are subject to change without notice.

PIH-XXXX + "X" + "X"

↓ L: AC 24V ±10%  
↓ F: AC 100V ~240V ±10%  
N: NTSC  
P: PAL

#### NTSC System

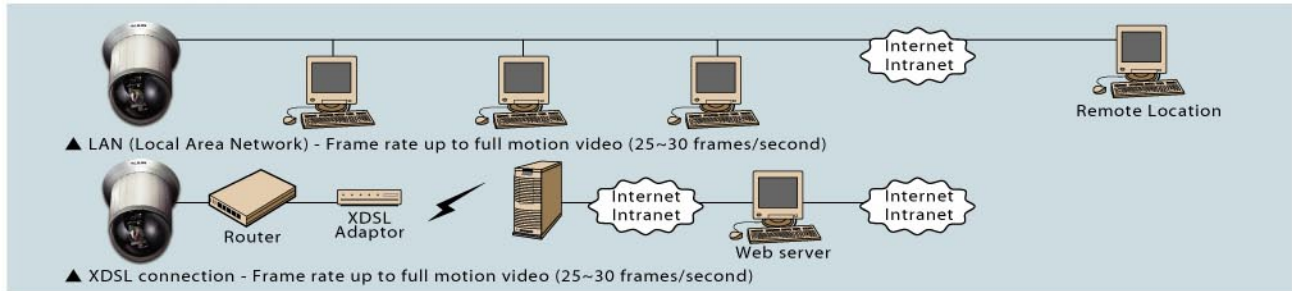
PIH-7522NL / PIH-7522NF  
 PIH-7522DHNL / PIH-7522DHNF  
 PIH-7622NL / PIH-7622NF  
 PIH-7622DHNL / PIH-7622DHNF  
 PIH-7535DHNL / PIH-7535DHNF  
 PIH-7635DHNL / PIH-7635DHNF

#### PAL System

PIH-7522PL / PIH-7522PF  
 PIH-7522DHPL / PIH-7522DHPF  
 PIH-7622PL / PIH-7622PF  
 PIH-7622DHPL / PIH-7622DHPF  
 PIH-7535DHPL / PIH-7535DHPF  
 PIH-7635DHPL / PIH-7635DHPF

**LILIN IP Fast Dome PIH-7625IP** is a combination of Fast Dome Camera and integrated web server, making it an ideal choice for remote surveillance applications. Features include remote monitoring of live video and full PTZ control via web browsers, alarm and motion detection function triggered for images transmitted via e-mail or FTP providing flexible alarm management.

## IP Fast Dome Connections



## NVR - Network Video Monitoring and Recording Software (Optional)

- Provide up to 36 channels of live monitoring, recording, and playback
- E-Map central management system for managing devices and alarm events
- IP Fast Dome PTZ control
- Hybrid video management system for both IP Fast Dome and DVR products
- User authentication
- Quick time stamp search for video playback
- AVI & JPEG file exporting Option
- Drag-n-drop for camera arrangement



## Additional IP Features

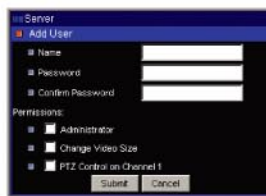
- Live video monitoring via HTML with throughput up to 30 frames/second
- Easy to use PTZ user interface
- Customized event script
- Images FTP and email provided
- Motion detection to record only when movement occurs
- Easy IP setup via ARP/Web page/IP installer
- API supported



IE VIEWER



Motion Detection



Security



Video Quality Adjustment



P/T/Z Adjustment

PIH-XXXX + "X" + "X" + "IP"

↓ N: NTSC  
↓ P: PAL  
↓ L: AC 24V ±10%  
↓ F: AC 100V ~240V ±10%  
↓ IP: IP function

### NTSC System

PIH-7625NL / PIH-7625NF  
 PIH-7625DNL / PIH-7625DNF  
 PIH-7625DWNL / PIH-7625DWNF  
 PIH-7625TNL / PIH-7625TNF  
 PIH-7625NLIIP / PIH-7625NFIP

### PAL System

PIH-7625PL / PIH-7625PF  
 PIH-7625DPL / PIH-7625DPF  
 PIH-7625DWPL / PIH-7625DWPF  
 PIH-7625TPL / PIH-7625TPF  
 PIH-7625PLIIP / PIH-7625PFIP

## PIH-7625 Series Common Specification

General	
System	NTSC / PAL
Power Consumption	13W
Image Pick-up Device	Sony 1/4" EXview HAD CCD
Effective Pixels	NTSC: 768 (H) x 494 (V) PAL: 752 (H) x 582 (V)
Scanning System	NTSC: 2:1 Interlace, 525 lines, 60 fields / sec PAL: 2:1 Interlace, 625 lines, 50 fields / sec
Horizontal & Vertical Sync.	NTSC: 15.734KHz, 60Hz PAL: 15.625KHz, 50Hz
Synchronization	Internal
Vedio Output	CVBS 1.0Vpp / 75Ω BNC
Horizontal Resolution	480TVL (Color) 520TVL(Mono)
S/N Ratio	More than 50dB
Minimum Illumination	0.1 Lux at F1.6 (Color) 0.01 Lux at F1.6 (Mono)
Cable Requirement	UL24AWGx2C Twisted Pair (recommended)
Operating Temperature	-10°C ~ +50°C
Operating Humidity	0% ~ 90%
Dimension (HxD)	208mm (8.3") x 145mm (5.6")
Weight	2.5Kg
Lens	
Zoom	25X
Focal Length	3.8~95mm
Aperture (F)	F1.6~F3.7
Angle Field of View	Wide: 39.2(V) 51.9(H) Tele: 1.6 (V) 2.2(H)
Pan and Tilt	
Pan Travel	360° Continuous
Tilt Travel	-5° ~ +95°
Pan / Tilt Accuracy	0.25°
Manual Pan/Tilt Speed	1° ~ 180° / Sec
Prset Pan/Tilt Speed	1° ~ 255° / Sec
Preset Dwell Time	1 ~ 255 Sec
Main Function	
Control Interface	RS-485
Address Setting	64 programmable ID
Iris Control	Auto / Manual
White Balance	Auto Correction / Auto Tracking / Indoor or Outdoor
BLC	On / Off
Auto Gain Control	8dB (Low), 22dB (Medium), 36dB (High)
Preset Position	128 Preset Positions
Preset Group	4 Groups
Alarm Input	6 Inputs (expandable to 64)

Model	PIH-7625D / PIH-7625DW
Wide Dynamic Range	PIH-7625DW: 400:1
Digital Zoom	PIH-7625D: 256X / PIH-7625DW: 2.56X
Electronic Shutter	NTSC: 1/60 ~ 1/100000 (1/Sec) PAL: 1/50 ~ 1/100000 (1/Sec)
Low Speed Shutter	0, 2~20, 40, 80, 160, 320, 510 (FLD)
Video Focus	Auto / One Shot / Manual, 0.07m (Wide) ~ 1m (Tele)
Dynamic Privacy Masking	On / Off, Up to 8 Privacy Zone
Negative - Positive	Y-Inverse (On / Off) C-Inverse (On / Off)
Image Memory Function	Left/Right Reverse, Top / Bottom Reverse, 180 Image Rotation, field Image Capture
Home Position	Preset 1

Design and specifications are subject to change without notice.

Model	PIH-7625T
Operation Mode	Normal / Track

7625 IP Function	
CPU	32 Bits RISC Processor
ROM	2MB Flash ROM
RAM	16MB SDRAM
Watch Dog	Chip to monitor out tolerance system voltage and abnormal program executing
LED	LEDs to indicate network and power and system status
Video Compression	JPEG; Motion JPEG
Video Adjustment	Brightness, Contrast, Hue, Saturation, Quality
Protocols	TCP / UDP / IP / ARP / ICMP / HTTP / FTP / Telnet / SMPT / DHCP / PPP
Max. Resolution	4 CIF : NTSC (704 x 480) PAL (704 x 576) CIF : NTSC (352 x 240) PAL (352 x 288)
Performance	Video throughput: Up to 30 fps
Event Trigger & Action	Programmable Event Script with Wizard support
Installation	Assign IP address : using ARP or Via Admin Web Page or IP Installer
Software Upgrade	Local or Remote upgrade via FTP & Telnet
System Requirement	Standard browser : IE4.x / 5.x or above / Net-scape Navigator 7.x on Win95 / 98/ NT / Linux
Security	Three-layer Password Protection

## Housing & Bracket (Optional)

### Indoor Application



PIH-303B  
(Wall Mount)



PIH-303P  
(Pendant Mount)



PIH-303BX

### Outdoor Application



PIH-510H  
(Pendant Mount)



PIH-510L  
(Wall Mount)



PIH-510CPM  
(Corner & Pole Mount)



PIH-510G  
(Swan Neck)